



United Brass Works, Inc.

714SI Main St. Randleman, NC 27317

Phone: 800/334-3035 Fax: 800/498-4696



## Model 90 Wafer Check Valve



**UL Listed • FM Approved\***

*\*As antiwater hammer check valve for fire pump service only!*

**250 WOG @ 180° Max**

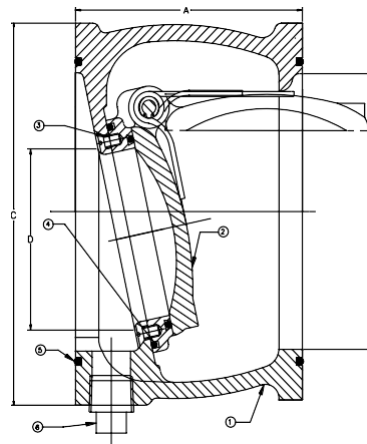
**100% Pressure Tested**

**Approved by New York City Board of Standards & Appeals under Calendar No. 157-84-SA.**

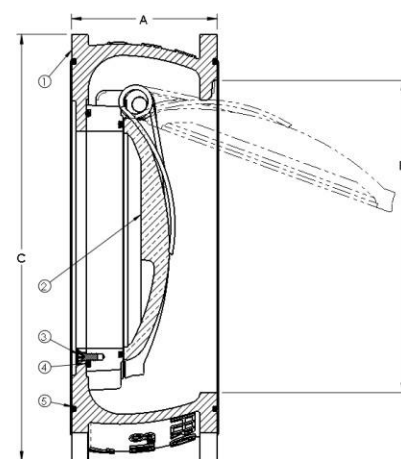
### MATERIAL LIST

NO.	DESCRIPTION	MATERIAL
1	Body	Ductile Iron
2	Seat Ring Assembly	Bronze
3	Screw	Stainless Steel
4	Seat Ring O-Ring	Buna-N
5	Face O-Ring	Buna-N
6	Pipe Plug	Steel (4" only)

*The 4" size is provided with ½" pipe plug in drain port as standard configuration.*

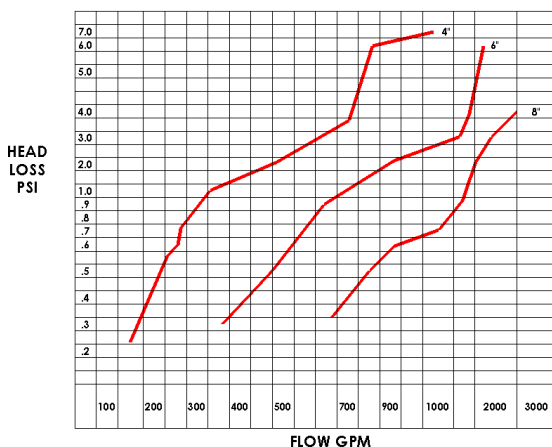


4" Size



6" & 8" Size

FRICTION LOSS



Size	A	B	C	D	Ship Wt. (lbs)	Qty. Per Ctn.
4"	4.25	4.03	6.86	3.00	13.85	1
6"	3.75	6.06	8.50	4.50	18.25	1
8"	3.75	7.98	11.00	6.00	29.0	1