



Engineered by Professionals for Professionals since 1910

FIRE PROTECTION PRODUCTS

UNITED BRASS WORKS, INC.

714 S. Main St.

Randleman, N.C. 27317

Phone: 800/334-3035

Fax: 800/498-4696

Email: sales@ubw.com

Web: www.ubw.com



Printed in U.S.A.

CONTENTS

Terms and Conditions - Page 28

Angle Valve.....6-7	Flow Indicators 21-22
Ball Valves1-2	Gate Valves, OS&Y.....20
Ball Drip Valves 16	Gauge Valves (Inspector's Test)..... 15
Check Valves, Grooved (Ductile)25	Globe Valves..... 3-5
Check Valves, Screwed (Ductile)26	Sediment Strainers ("Y" Pattern)..... 17-19
Check Valves, Spring Loaded Lift 14	Sprinkler Head Extensions..... 8
Check Valves, Swing Bronze.....9	"Sure Site" Indicators 21-22
Check Valves, Swing Bronze Rest. Orifice..... 11-13	Wafer Check Valves 23-24
Check Valves, Thread X Groove (Ductile)27	
Check Valves, In-Line..... 10	

NOTE: Steam Pressure Ratings on Valves are for Body and Components excluding discs. If Valve is equipped with a Rubber Disc, it will not withstand steam pressure.



Canada / US Listed

Underwriters Laboratory

FM Factory Mutual

PRESSURE TEMPERATURE RATINGS

The Pressure-Temperature ratings listed below were developed by the Manufacturers Standardization Society of the Valve and Fittings Industry, commonly referred to as MSS.

PRESSURE TEMPERATURE RATINGS - Non-Shock for Bronze Valve (MSS Standard Practice SP-80)

Note (1)

Pressure-Temperature ratings on Solder-Joint Pipe Systems is dependent not only on valve, fitting and tubing strength, but also on the composition of the solder used for joints. The user is responsible for selecting a solder composition that is compatible with the service conditions.

Pressure Class	125	150	200 (3)	250	300	
End Conn.	Thd	Thd	Thd ¹	Thd	Thd*	Thd

Note (2)

Pressure-Temperature ratings for valves fitted with non-metallic (composition) discs is dependent upon the composition of the disc material.

MATERIAL						
----------	--	--	--	--	--	--

Temp. Deg. F.	ASTM B-62 Alloy No. 836	ASTM B-61 Alloy No. 992
---------------	-------------------------	-------------------------

Note (3)

ASTM-B62 (Alloy 836) can be used to these pressures if temperature is limited to 406 F.

* With Union Bonnet

Alloy ASTM B584 (Alloy 844) valve are limited to pressures marked on valve bodies and no more than 350 F.

-20 to 150	200	300	400	400	1000	600
200	185	270	375	375	920	560
250	170	240	350	350	830	525
300	155	210	325	325	740	490
350	140	180	300	300	650	450
400	--	B	275	275	560	410
406	125	150	260	--	--	--
450	120	145	--	250	480	375
500	--	--	--	225	390	340
550	--	--	--	200	300	300



UNITED BRASS WORKS, INC

714 S. Main St.. Randleman, N.C. 27317

Phone: 800/334-3035 Fax: 800/498-4696 www.ubw.com



Model 80 Ball Valve

Double Female

(Complies with MSS-SP110-92)



200 lbs. WSP @ 406 ° Max

400 lbs. WOG * 100% Pressure Tested

Threaded Ends * Blowout Proof Stem

1/4" - 1/2" Full Flow

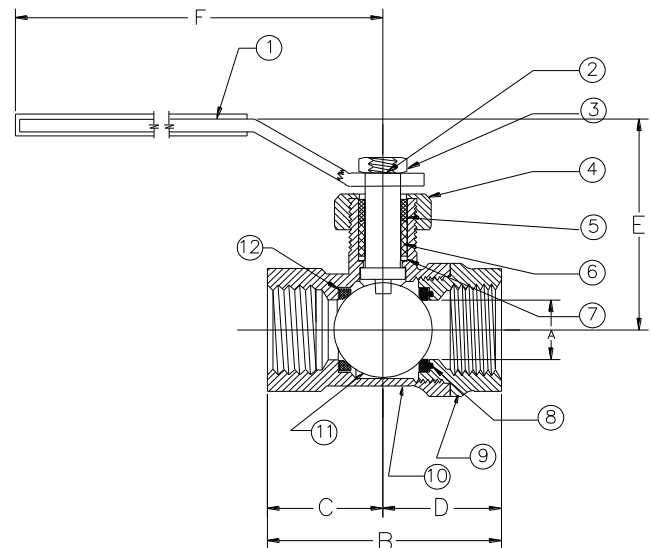
3/4" - 2" Large Port Diameters

CRN OCO7135.2

Contains Lead. Not Intended for Use in Potable Water Systems

MATERIAL LIST

NO.	DESCRIPTION	MATERIAL
1	Lever	Plated Steel w/ vinyl grip
2	Stem	Brass
3	Jam Nut	Plated Steel
4	Packing Nut	Brass
5	Packing Sleeve	Brass
6	Packing	Graphite Non-Asb.
7	Bevel Washer	Steel
8	O-Ring	Buna
9	Tail Piece (1/4" - 1/2") Tail Piece (3/4" - 2")	Brass Bronze
10	Body	Bronze
11	Ball	Chrome Plated Brass
12	Nest	PTFE



SIZE	A	B	C	D	E	F	SHIP WT. (lbs.)	QUAN. PER CTN.
1/4"	0.38	1.86	0.92	0.94	1.58	3.31	0.52	12
3/8"	0.38	1.86	0.92	0.94	1.58	3.31	0.52	12
1/2"	0.50	2.17	1.06	1.11	2.28	4.23	0.78	12
3/4"	0.63	2.05	1.20	1.31	2.38	4.23	0.98	12
1"	0.81	3.27	1.67	1.59	2.55	4.23	1.59	6
1 1/4"	1.00	3.48	1.72	1.77	3.19	5.47	2.47	4
1 1/2"	1.25	3.97	1.95	2.02	3.38	5.47	3.50	4
2"	1.50	4.41	2.14	2.27	3.56	5.47	5.00	2



UNITED BRASS WORKS, INC

714 S. Main St.. Randleman, N.C. 27317

Phone: 800/334-3035 Fax: 800/498-4696 www.ubw.com



Model 80MXF Ball Valve

200 lbs. WSP @ 406 ° Max

400 lbs. WOG

100% Pressure Tested

Blow-Out Proof Stem

1/4" - 1/2" Full Flow

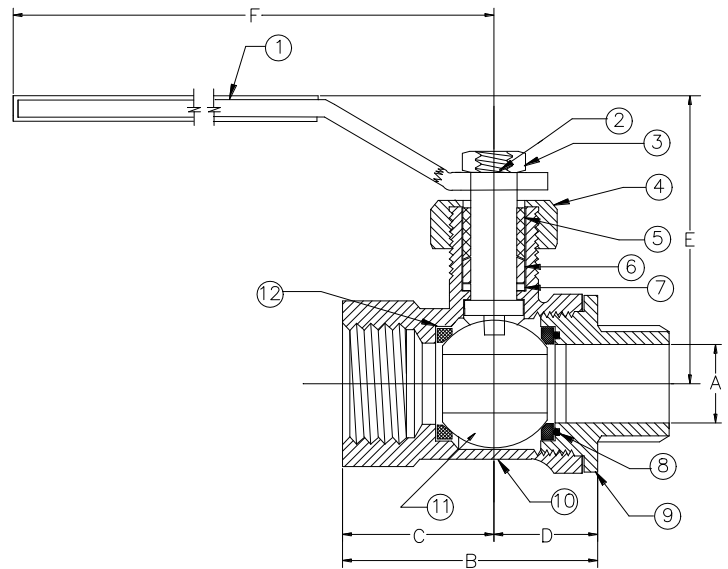
3/4" - 2" Large Port Diameters

CRN OCO7135.2

Contains Lead. Not Intended for Use in Potable Water Systems

MATERIAL LIST

NO.	DESCRIPTION	MATERIAL
1	Lever	Plated Steel w/ vinyl grip
2	Stem	Brass
3	Jam Nut	Plated Steel
4	Packing Nut	Brass
5	Packing Sleeve	Brass
6	Packing	Graphite Non-Asb.
7	Bevel Washer	Steel
8	O-Ring	Nitrile Buna-N
9	Tail Piece (1/4" - 1/2") Tail Piece (3/4" - 2")	Brass Bronze
10	Body	Bronze
11	Ball	Chrome Plated Brass
12	Nest	PTFE



SIZE	A	B	C	D	E	F	SHIP WT. (lbs.)	QUAN. PER CTN.
1/4"	0.38	1.86	0.92	0.94	1.55	3.31	0.52	12
3/8"	0.38	1.86	0.92	0.94	1.55	3.31	0.52	12
1/2"	0.50	2.17	1.06	1.11	2.28	4.23	0.78	12
3/4"	0.63	2.52	1.20	1.3	2.35	4.23	0.98	12
1"	0.81	3.27	1.67	1.59	2.55	4.23	1.59	6
1 1/4"	1.00	3.48	1.72	1.77	3.19	5.47	2.47	4
1 1/2"	1.25	3.97	7.95	2.02	3.38	5.47	3.50	4
2"	1.50	4.41	2.14	2.27	3.56	5.47	5.00	2



UNITED BRASS WORKS, INC

714 S. Main St.. Randleman, N.C. 27317

Phone: 800/334-3035 Fax: 800/498-4696 www.ubw.com



Model 125S Globe Valve

Soft Disc

200 WOG @ 180 ° Max

100% Pressure Tested

Threaded Ends • Integral Seat

Rising Stem

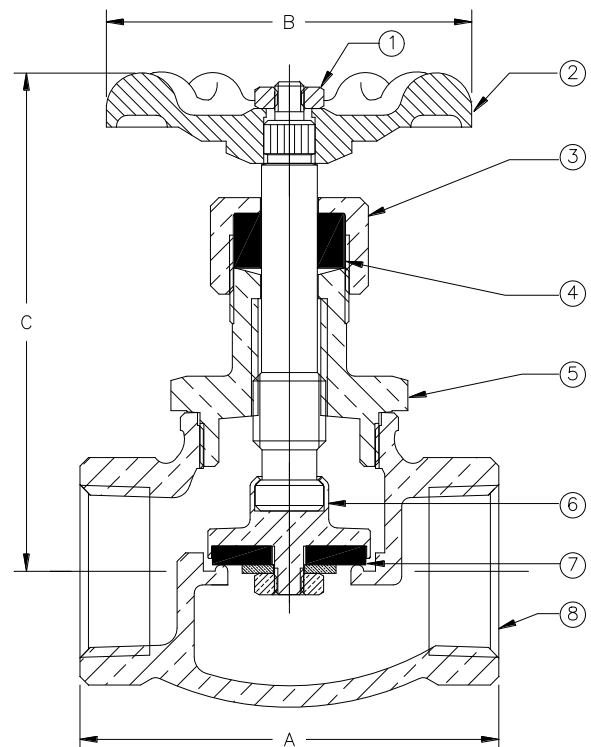
Swivel Disc Holder

Contains Lead. Not Intended for Use in Potable Water Systems

MATERIAL LIST

NO.	DESCRIPTION	MATERIAL
1	Hex Nut	Steel
2	Hand Wheel	Zinc or Ductile Iron
3	Packing Nut	Brass
4	Packing	Graphite Non-Asb.
5	Bonnet (1/4" – 1") Bonnet (1 1/4" – 2")	Brass Bronze
6	Stem & Disc Holder	Brass
7	Disc	Buna N
8	Body	Bronze

Size	1/4"	3/8"
A	1.75	1.84
B	1.75	1.75
C (closed)	2.88	3.13
Ship Wt. (lbs.)	0.44	0.56
Qty. Unit Pack	12	12
Qty. Per Case	60	60





UNITED BRASS WORKS, INC

714 S. Main St.. Randleman, N.C. 27317

Phone: 800/334-3035 Fax: 800/498-4696 www.ubw.com



Model 125SUL Globe Valve Soft Disc



**UL Listed for Fire Sprinkler Service at 250 WOG
200 WOG @ 180 ° Max**

100% Pressure Tested

Threaded Ends

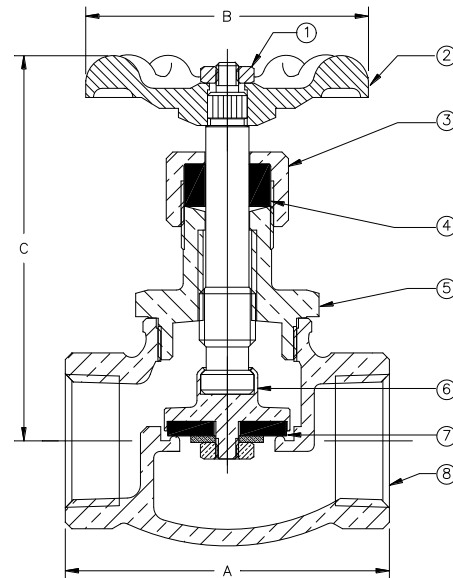
Rising Stem • Integral Seat

Swivel Disc Holder

Contains Lead. Not Intended for Use in Potable Water Systems

MATERIAL LIST

NO.	DESCRIPTION	MATERIAL
1	Hex Nut	Steel
2	Hand Wheel	Zinc or Ductile Iron
3	Packing Nut	Brass
4	Packing	Graphite Non-Asb.
5	Bonnet (1/4" – 1") Bonnet (1 1/4" – 2")	Brass Bronze
6	Stem & Disc Holder	Brass
7	Disc	Buna N
8	Body	Bronze



Size	1/2"	3/4"	1"	1 1/4"	1 1/2"	2"
A	2.22	2.47	2.97	3.56	4.06	4.69
B	2.03	2.38	2.75	3.00	3.72	3.72
C (closed)	3.38	3.50	4.25	4.75	5.50	5.50
Ship Wt. (lbs.)	0.69	0.94	1.76	2.50	3.26	5.32
Qty. Unit Pack	12	6	6	4	2	2
Qty. Per Case	72	30	36	24	12	12



UNITED BRASS WORKS, INC.
 714 S. Main St. Randleman, NC 27317
 Tel: 800-334-3035 Fax: 800-498-4696 www.ubw.com



Model 175S Globe Valve

200 WOG @ 180 ° Max

100% Pressure Tested

Threaded Ends

Soft Disc

Rising Stem

Integral Seat

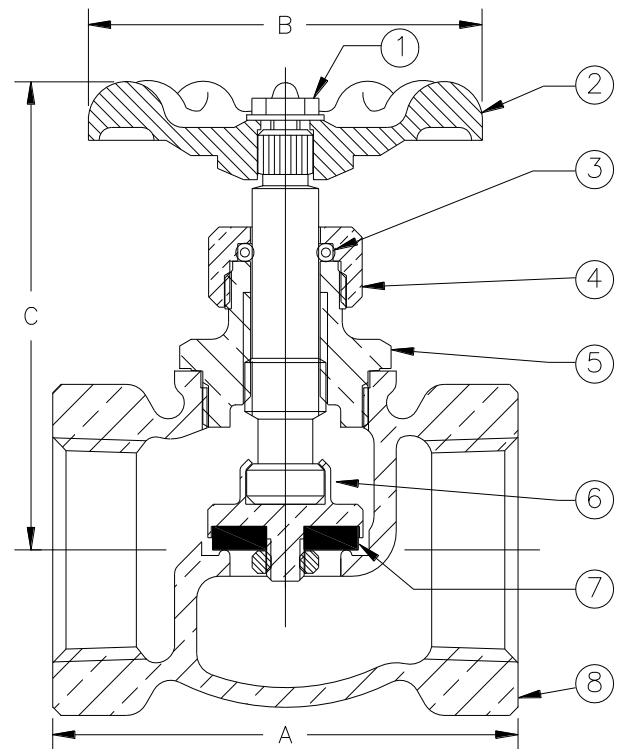
Swivel Disc Holder

Contains Lead. Not Intended for Use in Potable Water Systems

MATERIAL LIST

NO.	DESCRIPTION	MATERIAL
1	Machine Screw	Steel
2	Hand Wheel	Zinc or Ductile Iron
3	O-Ring	Buna
4	O-Ring Nut	Brass
5	Bonnet	Brass
6	Stem / Disc Assm.	Brass
7	Disc	Buna N
8	Body	Bronze

Size	1/2"	3/4"	1"
A	2.00	2.16	2.66
B	2.13	2.13	2.13
C (Open)	2.66	2.66	2.94
C (Closed)	2.30	2.27	2.63
Ship Wt. (lbs.)	0.65	0.75	1.17
Qty. Unit Pack	12	6	6
Qty. Per Case	72	60	60





UNITED BRASS WORKS, INC.

714 S. Main St., Randleman, NC 27317

Tel: 800-334-3035 Fax: 800-498-4696 www.ubw.com



Model 126S Angle Valve

Soft Disc

200 WOG @ 180 ° Max

100% Pressure Tested

Threaded Ends

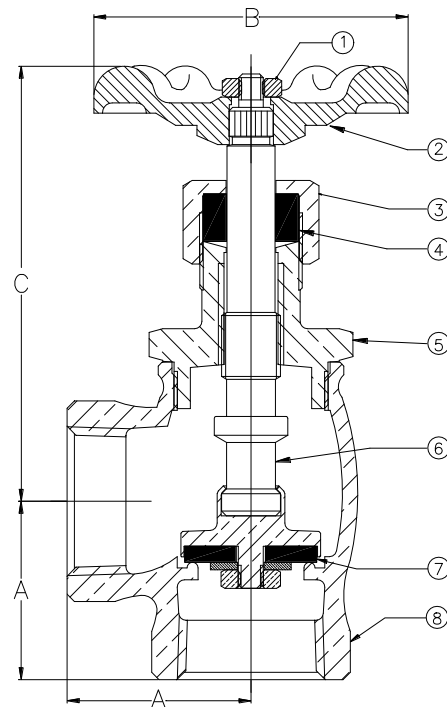
Rising Stem • Integral Seat

Swivel Disc Holder

Contains Lead. Not Intended for Use in Potable Water Systems

MATERIAL LIST

NO.	DESCRIPTION	MATERIAL
1	Hex Nut	Steel
2	Hand Wheel	Zinc or Ductile Iron
3	Packing Nut	Brass
4	Packing	Graphite Non-Asb.
5	Bonnet (1/4" – 1") Bonnet (1 1/4" – 2")	Brass Bronze
6	Stem & Disc Holder	Brass
7	Disc	Buna N
8	Body	Bronze



Size	1/4"	3/8"
A	0.84	0.94
B	1.75	1.75
C (closed)	2.63	3.00
Ship Wt. (lbs.)	0.44	0.56
Qty. Unit Pack	12	12
Qty. Per Case	60	60



UNITED BRASS WORKS, INC.
 714 S. Main St., Randleman, NC 27317
 Tel: 800-334-3035 Fax: 800-498-4696 www.ubw.com



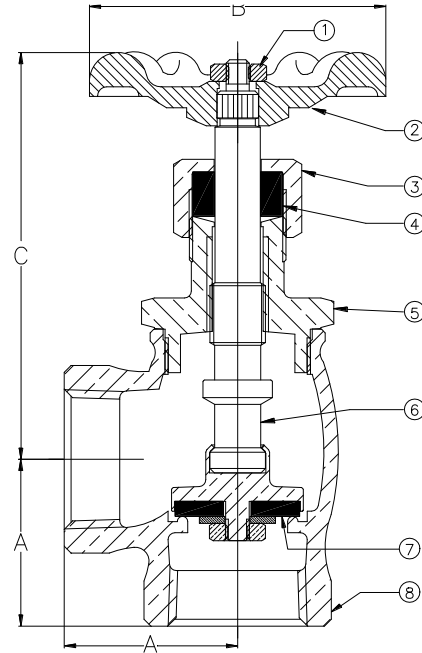
Model 126SUL Angle Valve Soft Disc



**UL Listed for Fire Sprinkler Service at 250 WOG
 200 WOG @ 180 ° Max
 100% Pressure Tested
 Threaded Ends
 Rising Stem • Integral Seat
 Swivel Disc Holder**
***Contains Lead. Not Intended for Use in Potable
 Water System***

MATERIAL LIST

NO.	DESCRIPTION	MATERIAL
1	Hex Nut	Steel
2	Hand Wheel	Zinc or Ductile Iron
3	Packing Nut	Brass
4	Packing	Graphite Non-Asbestos
5	Bonnet (1/2" – 1") Bonnet (1 1/4" – 2")	Brass Bronze
6	Stem & Seat Assembly	Brass
7	Disc	Buna N
8	Body	Bronze



Size	1/2"	3/4"	1"	1 1/4"	1 1/2"	2"
A	1.03	1.22	1.47	1.75	2.00	2.34
B	2.03	2.38	2.75	3.00	3.72	3.72
C (closed)	3.13	3.25	4.38	4.50	5.25	5.63
Ship Wt. (lbs.)	0.69	0.94	1.76	2.50	3.26	5.32
Qty. Unit Pack	12	6	6	4	2	2
Qty. Per Case	72	30	36	24	12	12



UNITED BRASS WORKS, INC

714 S. Main St.. Randleman, N.C. 27317

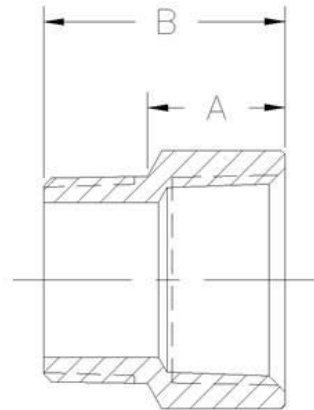
Phone: 800/334-3035 Fax: 800/498-4696



Sprinkler Head Extensions

200 lbs. WOG

**Available in 1/2" NPT Male X 1/2"
NPT Female and 3/4" NPT Male X
3/4" Female NPT in Assorted Lengths
Brass (ASTM B16)**



Part #	Size	A Nominal Length	B Nominal Length	Weight	Qty./Box
101L	1/2"	.50	1.00	.08	100
102	1/2"	.75	1.38	.11	100
103	1/2"	1.00	1.75	.16	50
104	1/2"	1.50	2.25	.21	50
105	1/2"	2.00	2.75	.27	50
106	3/4"	.50	1.00	.10	72
107	3/4"	.75	1.38	.14	56
108	3/4"	1.00	1.75	.19	48

Parts #101L and 105 threads are shorter than standard to provide minimum length of extension. (Use these sizes only when absolutely necessary.) These fittings may not seal if mating parts are not made to NPT gauge. Use care in applying sufficient thread sealant and tightening properly. Inspect for leaks.



UNITED BRASS WORKS, INC.
 714 S. Main St., Randleman, NC 27317
 Tel: 800-334-3035 Fax: 800-498-4696 www.ubw.com



Model 99S Swing Check Valve



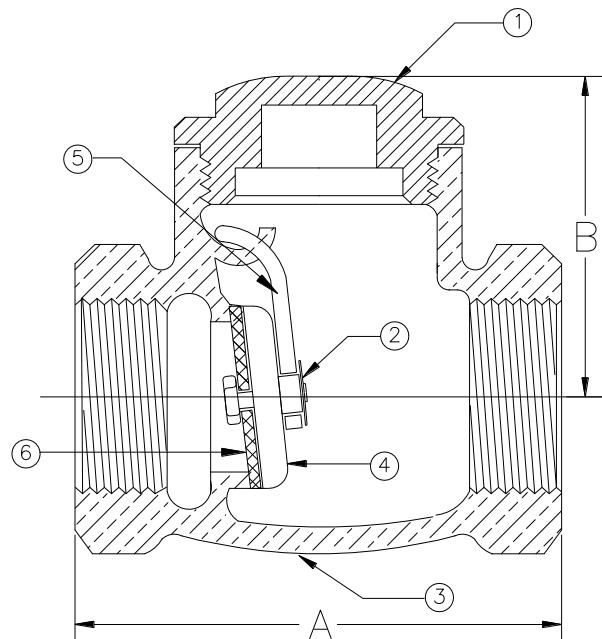
200 WOG @ 180 ° Max
100% Pressure Tested • Integral Seat
Threaded Ends • Soft Disc

Not recommended for pulsating or vibrating service.

Do Not Install laying on side.

Keep seat clean.

****Contains Lead. Not Intended for Use in Potable Water Systems****



MATERIAL LIST

NO.	DESCRIPTION	MATERIAL
1	Cap (1/4" - 1") Cap (1 1/4" - 2")	Brass Bronze
2	Washer	Brass
3	Body	Bronze
4	Disc	Brass
5	Hinge	Stainless Steel
6	Disc	Buna-N

Size	1/4"	3/8"	1/2"	3/4"	1"	1 1/4"	1 1/2"	2"
A	1.89	1.89	2.14	2.51	3.03	3.45	3.81	4.44
B	1.22	1.22	1.28	1.53	2.06	2.20	2.20	2.86
Ship Wgt. (lbs.)	0.45	0.45	0.58	0.81	1.62	1.81	2.41	3.42
Qty. Unit Pack	12	12	12	12	6	6	4	2
Qty. Per Case	60	60	60	60	30	18	12	6



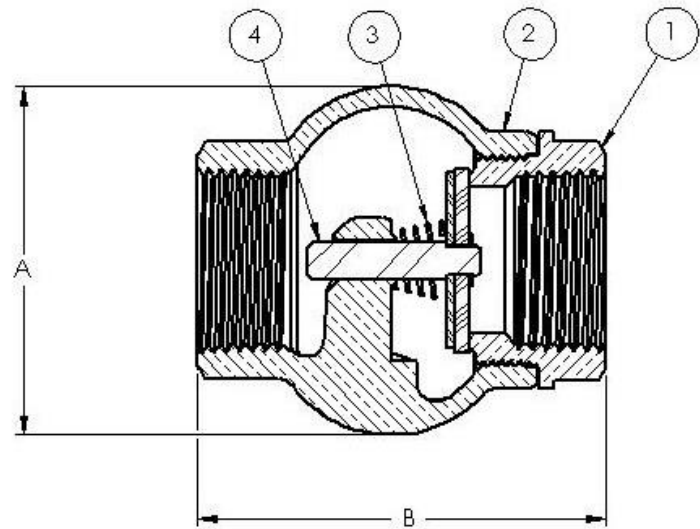
UNITED BRASS WORKS, INC

714 S. Main St.. Randleman, N.C. 27317

Phone: 800/334-3035 Fax: 800/498-4696 www.ubw.com



Model 97S Full Flow In-Line Check Valve 300 WOG @ 180°F Max 100% Pressure Tested Threaded Ends • Soft Disc • Integral Seat



MATERIAL LIST

NO.	DESCRIPTION	MATERIAL
1	Tailpiece	Brass
2	Body	Brass
3	Spring	Stainless Steel
4	Disc Holder Assembly	Stainless Steel

Size	A	B	Weight
1/4"	1.00	1.90	.32
1/2"	1.30	2.10	.40
3/4"	1.58	2.21	.55
1"	2.40	2.80	1.10



UNITED BRASS WORKS, INC.

714 S. Main St., Randleman, NC 27317

Tel: 800-334-3035 Fax: 800-498-4696 www.ubw.com



Model 210 Swing Check Valve

200 WOG @ 180 ° Max

100% Pressure Tested • Integral Seat
Threaded Ends • Metal Disc

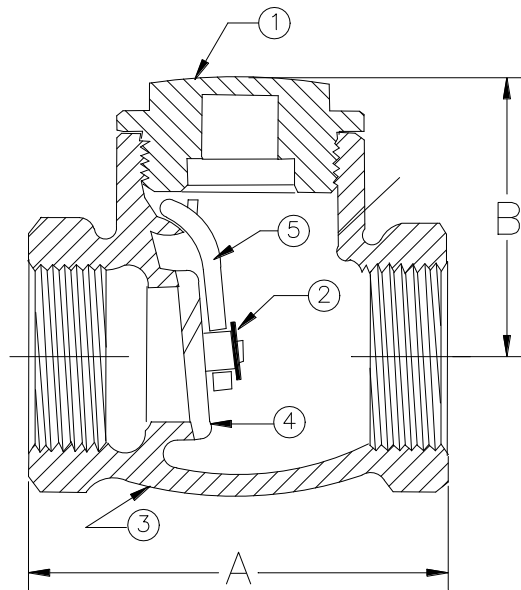
*Swing Check Valve with 3/32" orifice in Clapper
for use on automatic pressure switch line of fire pump
installation as required by NFPA No. 20A-7-5.2.1.*

*Not Recommended for Pulsating or Vibrating Service!
Install in horizontal position only!*

Contains Lead. Not for Use in Potable Water Systems

MATERIAL LIST

NO.	DESCRIPTION	MATERIAL
1	Cap (1/4" – 1") Cap (1 1/4" – 2")	Bronze Brass
2	Washer	Brass
3	Body	Bronze
4	Disc	Brass
5	Hinge	Stainless Steel



Size	1/4"	3/8"	1/2"	3/4"	1"	1 1/4"	1 1/2"	2"
A	1.89	1.89	2.14	2.51	3.03	3.45	3.81	4.44
B	1.22	1.22	1.28	1.53	2.06	2.20	2.20	2.86
Ship Wgt. (lbs.)	0.45	0.45	0.58	0.81	1.62	1.81	2.41	3.42
Qty. Unit Pack	12	12	12	12	6	6	4	2
Qty. Per Case	60	60	60	60	30	18	12	6



UNITED BRASS WORKS, INC.
 714 S. Main St., Randleman, NC 27317
 Tel: 800-334-3035 Fax: 800-498-4696 www.ubw.com



Model 210A Swing Check Valve

200 WOG @ 180 ° Max
100% Pressure Tested • Integral Seat
Threaded Ends • Metal Disc

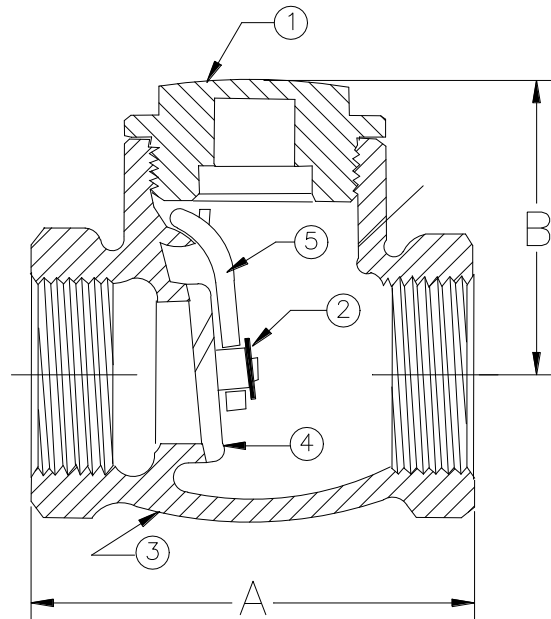
Swing Check Valve with 1/8" orifice in clapper.

Not Recommended for Pulsating or Vibrating Service!
Install in horizontal position only!

Contains Lead. Not for Use in Potable Water Systems

MATERIAL LIST

NO.	DESCRIPTION	MATERIAL
1	Cap (1/4" – 1") Cap (1 1/4" – 2")	Bronze Brass
2	Washer	Brass
3	Body	Bronze
4	Disc	Brass
5	Hinge	Stainless Steel



Size	1/4"	3/8"	1/2"	3/4"	1"	1 1/4"	1 1/2"	2"
A	1.89	1.89	2.14	2.51	3.03	3.45	3.81	4.44
B	1.22	1.22	1.28	1.53	2.06	2.20	2.20	2.86
Ship Wgt. (lbs.)	0.45	0.45	0.58	0.81	1.62	1.81	2.41	3.42
Qty. Unit Pack	12	12	12	12	6	6	4	2
Qty. Per Case	60	60	60	60	30	18	12	6



UNITED BRASS WORKS, INC.

714 S. Main St., Randleman, NC 27317

Tel: 800-334-3035 Fax: 800-498-4696 www.ubw.com



Model 210S Swing Check Valve

200 WOG @ 180 ° Max

100% Pressure Tested • Integral Seat
Threaded Ends • Metal Disc

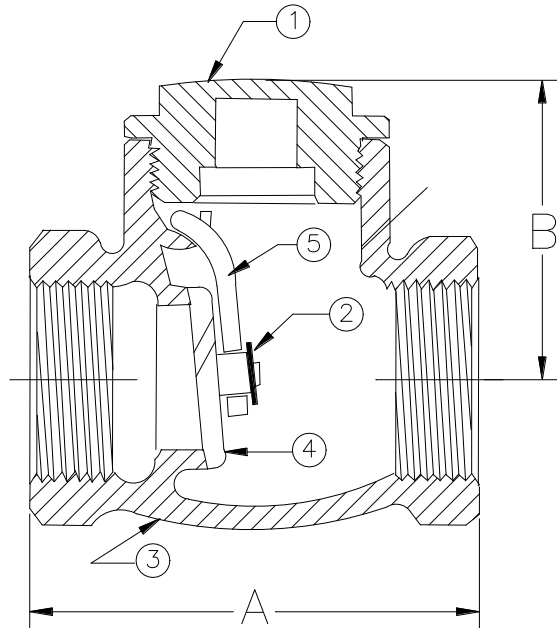
*Swing Check valve Special with 1/32" Hole in Clapper
for use in Anti-Freeze Loop NFPA 13 5-5.4.*

*Not Recommended for Pulsating or Vibrating Service!
Install in horizontal position only!*

Contains Lead. Not for Use in Potable Water Systems

MATERIAL LIST

NO.	DESCRIPTION	MATERIAL
1	Cap (1/4" – 1") Cap (1 1/4" – 2")	Bronze Brass
2	Washer	Brass
3	Body	Bronze
4	Disc	Brass
5	Hinge	Stainless Steel



Size	1/4"	3/8"	1/2"	3/4"	1"	1 1/4"	1 1/2"	2"
A	1.89	1.89	2.14	2.51	3.03	3.45	3.81	4.44
B	1.22	1.22	1.28	1.53	2.06	2.20	2.20	2.86
Ship Wgt. (lbs.)	0.45	0.45	0.58	0.81	1.62	1.81	2.41	3.42
Qty. Unit Pack	12	12	12	12	6	6	4	2
Qty. Per Case	60	60	60	60	30	18	12	6



UNITED BRASS WORKS, INC.
 714 S. Main St. Randleman, N.C. 27317
 Tel: 800-334-3035 Fax: 800-498-4696 www.ubw.com



Model 50 Check Valve

Spring Loaded Lift Check
Complies with MSS-SP-80-2013

400 WOG @ 180 ° Max

100% Pressure Tested

Threaded Ends • Soft Disc

Integral Seat

Equipped with 24S Soft Disc for Water Service

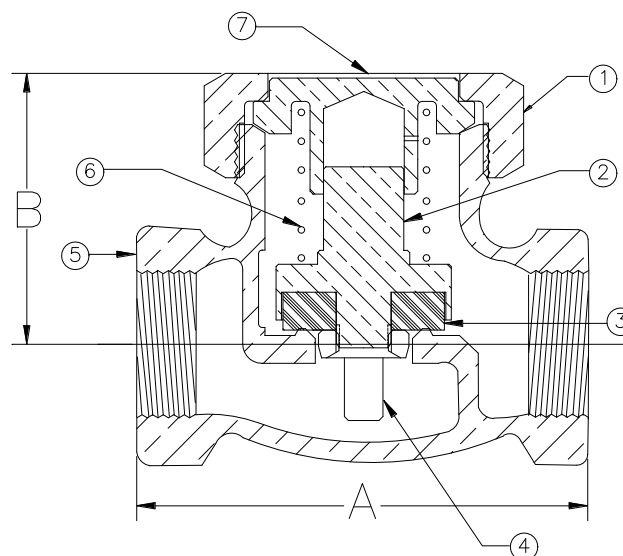
Not recommend for steam service

**Contains Lead. Not For Use in Water Systems*

*Intended for Human Consumption**

MATERIAL LIST

NO.	DESCRIPTION	MATERIAL
1	Bonnet Nut (1/4" – 3/8") Bonnet Nut (1/2" – 2")	Brass Bronze
2	Disc Holder (1/4" -3/4") Disc Holder (1" – 2")	Brass Bronze
3	Soft Disc	Buna
4	Disc Holder Nut (1/4" – 1 1/4") Disc Holder Nut (1 1/2" – 2")	Brass Bronze
5	Body	Bronze
6	Spring	Stainless Steel
7	Guide (1/4" – 3/4") Guide (1" – 2")	Brass Bronze



Size	1/4"	3/8"	1/2"	3/4"	1"	1 1/4"	1 1/2"	2"
A	2.19	2.36	2.59	3.17	3.75	4.28	4.78	5.88
B	1.19	1.50	1.88	1.81	2.06	2.38	2.63	3.25
Ship Wgt. (lbs.)	0.56	0.75	1.03	1.61	2.44	3.84	5.20	9.00
Qty. Per Ctn.	12	12	12	6	6	2	2	1



UNITED BRASS WORKS, INC.
 714 S. Main St., Randleman, NC 27317
 Tel: 800-334-3035 Fax: 800-498-4696 www.ubw.com

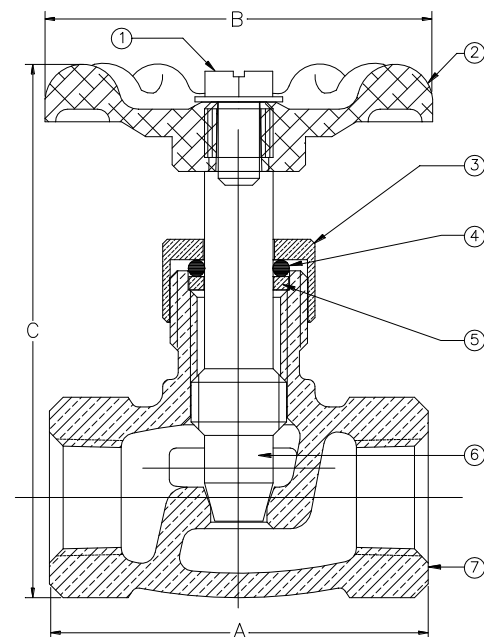


Model 76 Gauge Test Valve



300 WOG @ 180 ° Max
100% Pressure Tested
Screwed Ends

***Contains lead. Not Intended for
Use in Potable Water Systems***



MATERIAL LIST

NO.	DESCRIPTION	MATERIAL
1	Screw	Stainless Steel
2	Hand Wheel	Zinc
3	Packing Nut	Brass
4	O-Ring	Nitrile
5	Washer	Brass
6	Stem	Brass
7	Body	Bronze

Size	1/4"
A	1.750
B	1.734
C	2.469
Ship Wgt. (lbs.)	0.34
Qty. Per Ctn.	25



UNITED BRASS WORKS, INC.
 714 S. Main St. Randleman, N.C. 27317
 Tel: 800-334-3035 Fax: 800-498-4696 www.ubw.com

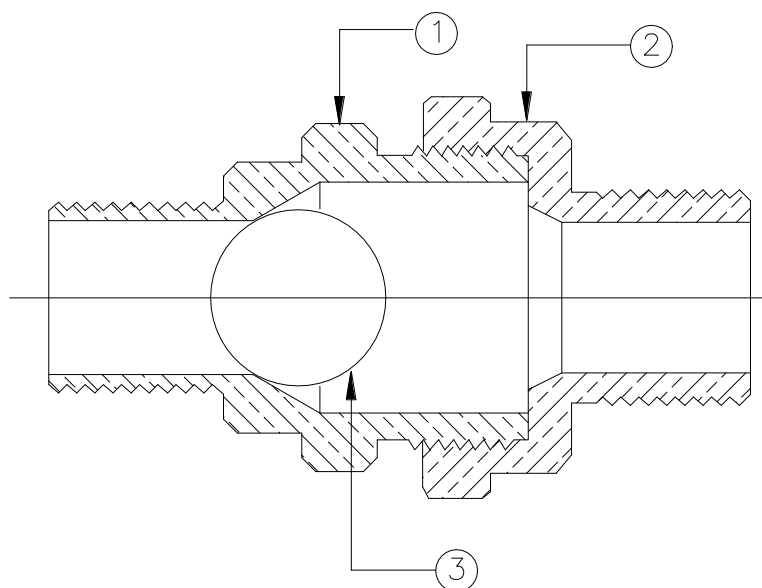


Model 235 Ball Drip Valve

200 lbs. WOG



**Valve unseats only by force of gravity
 causing ball to fall off seat.
 Use only in horizontal position.
 Do Not Use with more than
 1 ft. of head (water pressure) on ball
 check.**



MATERIAL LIST

NO.	DESCRIPTION	MATERIAL
1	Body	Brass
2	Tail Piece	Brass
3	Ball	Stainless Steel

Size	1/2"	3/4"
Ship Wgt. (lbs.)	0.43	0.56
Qty. Unit Pack	12	12



UNITED BRASS WORKS, INC.
 714 S. Main St., Randleman, NC 27317
 Tel: 800-334-3035 Fax: 800-498-4696 www.ubw.com



Model 200 Strainer With Steel Plug 200WSP @ 406° Max 400 WOG

**100% Pressure Tested
 Threaded Ends**

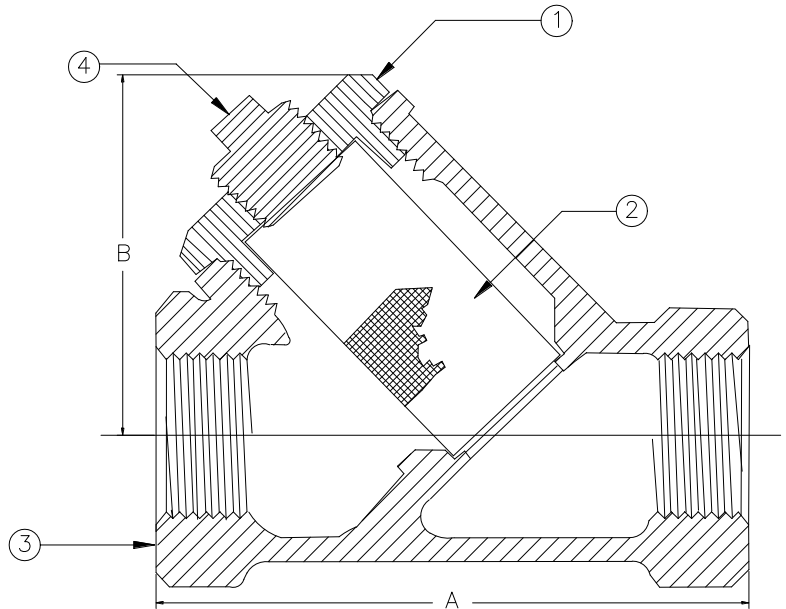
All Available in 24, 50 or 100 Mesh screen sizes.

**Contains Lead. Not Intended for Use in Potable Water
 Systems**

CRN OCO7135.2C

MATERIAL LIST

NO.	DESCRIPTION	MATERIAL
1	Cap (1/4" - 1") Cap (1 1/4" - 2")	Brass ASTM B16 Bronze ASTM B62
2	Screen	Stainless Steel ASTM E437
3	Body	Bronze ASTM B62
4	Plug	Stainless Steel ASTM A108



Size	1/4"	3/8"	1/2"	3/4"	1"	1 1/4"	1 1/2"	2"
A	2.73	2.72	2.84	3.41	3.94	5.41	6.81	8.19
B	1.87	1.87	1.81	2.09	2.86	4.13	4.31	5.00
Ship Wgt. (lbs)	0.75	0.78	0.81	1.36	2.39	2.39	5.78	10.13
Qty. Per Ctn.	12	12	12	12	6	6	4	2



UNITED BRASS WORKS, INC.

714 S. Main St., Randleman, NC 27317

Tel: 800-334-3035 Fax: 800-498-4696 www.ubw.com



Model 200WBP Strainer

With Brass Plug

200WSP @ 406° Max

400 WOG

100% Pressure Tested

Threaded Ends

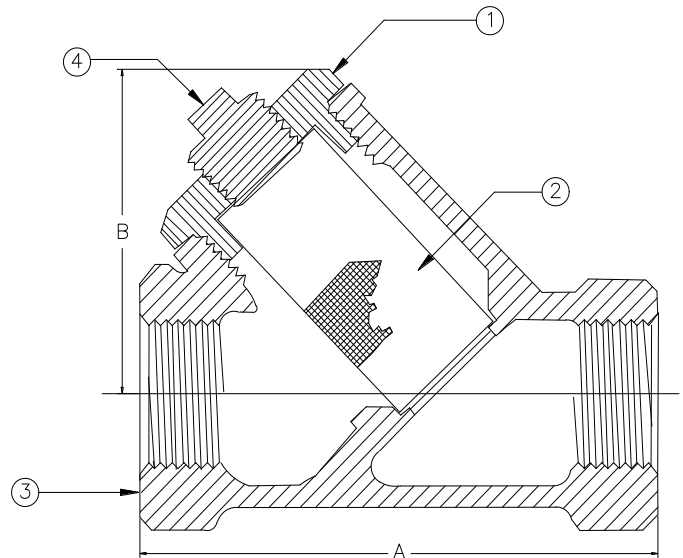
All Available in 24, 50 or 100 Mesh screen sizes.

Contains Lead. Not Intended for Use in Potable Water Systems

CRN OCO7135.2C

MATERIAL LIST

NO.	DESCRIPTION	MATERIAL
1	Cap (1/4" - 1") Cap (1 1/4" - 2")	Brass Bronze
2	Screen	Stainless Steel
3	Body	Bronze
4	Plug	Brass



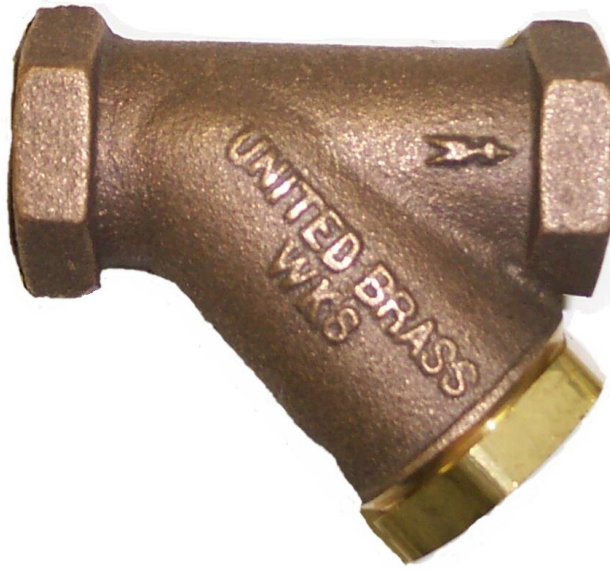
Size	1/4"	3/8"	1/2"	3/4"	1"	1 1/4"	1 1/2"	2"
A	2.73	2.72	2.84	3.41	3.94	5.41	6.81	8.19
B	1.87	1.87	1.81	2.09	2.86	4.13	4.31	5.00
Ship Wgt. (lbs)	0.75	0.78	0.81	1.36	2.39	2.39	5.78	10.13
Qty. Per Ctn.	12	12	12	12	6	6	4	2



UNITED BRASS WORKS, INC.

714 S. Main St., Randleman, NC 27317

Tel: 800-334-3035 Fax: 800-498-4696 www.ubw.com



Model 200WSC Strainer With Solid Cap

200 WSP @ 406° Max

400 WOG

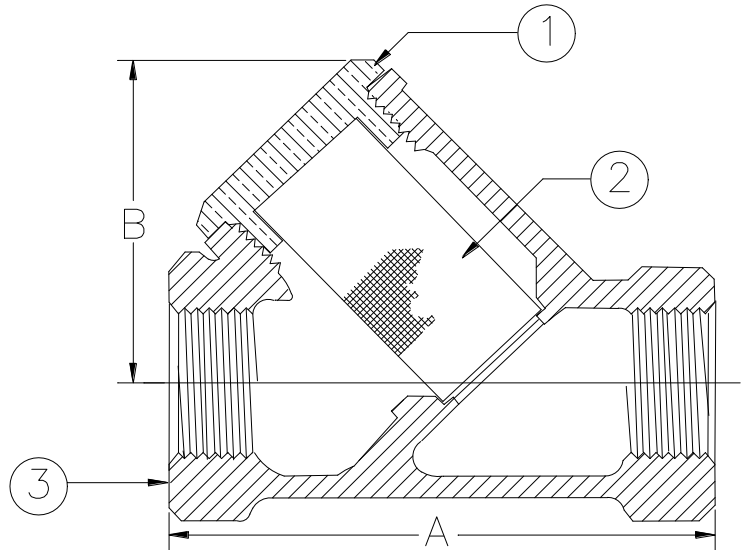
100% Pressure Tested
Threaded Ends

All Available in 24, 50 or 100 Mesh screen sizes.

**Contains Lead. Not Intended for Use In Potable Water
Systems*
CRN OCO7135.2C*

MATERIAL LIST

NO.	DESCRIPTION	MATERIAL
1	Cap (1/4" - 1")	Brass
2	Screen	Stainless Steel
3	Body	Bronze



Size	1/4"	3/8"	1/2"	3/4"	1"
A	2.73	2.72	2.84	3.41	3.94
B	1.87	1.87	1.81	2.09	2.86
Ship Wgt. (lbs)	0.75	0.78	0.81	1.36	2.39
Qty. Per Ctn.	12	12	12	12	6



UNITED BRASS WORKS, INC.
 714 S. Main St. Randleman, N.C. 27317
 Tel: 800-334-3035 Fax: 800-498-4696 www.ubw.com



Model 18 Gate Valve

Bronze Screwed Ends
Outside Screw & Yoke

 **UL Listed / FM Approved @ 175 lbs. WOG**

175 WOG @ 180 ° Max

100% Pressure Tested

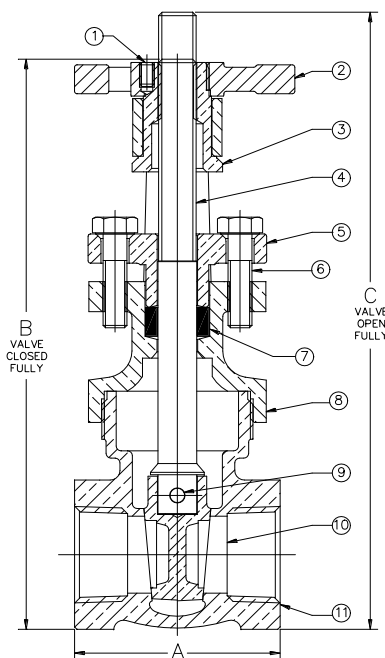
Rising Stem

MEA Approval 255-93-E

Contains Lead. Not For Use in Potable Water Systems

MATERIAL LIST

NO.	DESCRIPTION	MATERIAL
1	Set Screw	Steel
2	Hand Wheel	Iron
3	Yoke Bushing	Brass
4	Stem	Brass
5	Packing Gland	Brass
6	Cap Screw	Steel
7	Packing	NAFG
8	Bonnet	Bronze
9	Spiral Pin	Stainless Steel
10	Wedge	Bronze
11	Body	Bronze



Size	A	B	C	Ship Wgt. (lbs.)	Qty. Unit Pack	Qty. Per Case
1	2.55	6.55	7.97	3.85	6	18
1 1/4"	2.81	7.61	9.47	6.26	2	12
1 1/2"	2.86	7.84	9.75	6.55	2	6
2"	3.09	8.88	11.22	9.96	2	6



UNITED BRASS WORKS, INC
 714 S. Main St.. Randleman, N.C. 27317
 Phone: 800/334-3035 Fax: 800/498-4696 www.ubw.com



Model 70P High Pressure Indicator With Polycarbonate* Window 175 WOG @ 150° Max

100% Pressure Tested

Male X Female Configuration

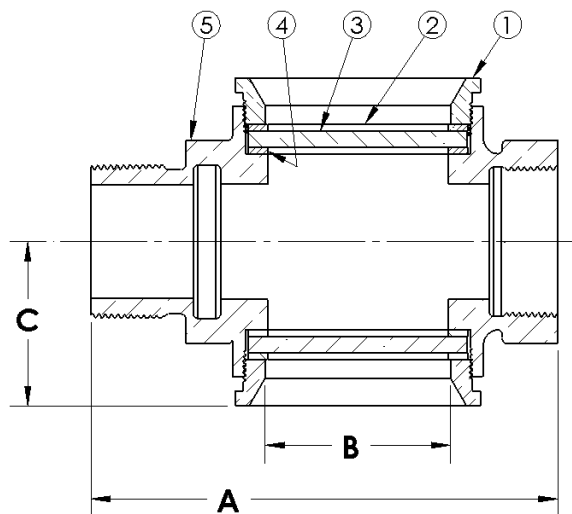
***Contains lead. Not For Use In Water Systems
 Intended for Human Consumption***



Continuous use above 150° can cause embrittlement and reduce strength of Polycarbonate Window.

MATERIAL LIST

NO.	DESCRIPTION	MATERIAL
1	Ring	Brass
2	Gasket	Cork
3	Window	Polycarbonate
4	Gasket	Buna
5	Body	Bronze



Size	3/4"	1"	1 1/4"	1 1/2"	2"	2 1/2"
Operating Pressure (PSI) ***	175	175	175	175	175	175
A	4.00	4.00	4.00	6.18	6.29	6.38
B	1.62	1.62	1.62	2.43	2.43	2.43
C	1.36	1.26	1.45	2.12	2.15	2.25
Ship Wgt. (lbs)	1.37	1.50	1.50	4.69	4.56	5.25
Qty. Unit Pack	4	4	4	2	2	1
Unit Per Case	40	40	40			

*** Higher Pressure Glass Available As Special



UNITED BRASS WORKS, INC.
 714 S. Main St. Randleman, N.C. 27317
 Tel: 800-334-3035 Fax: 800-498-4696 www.ubw.com



Model 70HRP Sure Site Flow Indicator

175 WOG @ 150° Max

100% Pressure Tested

Male X Female Configuration

Built-In 1/2" Restricting Orifice

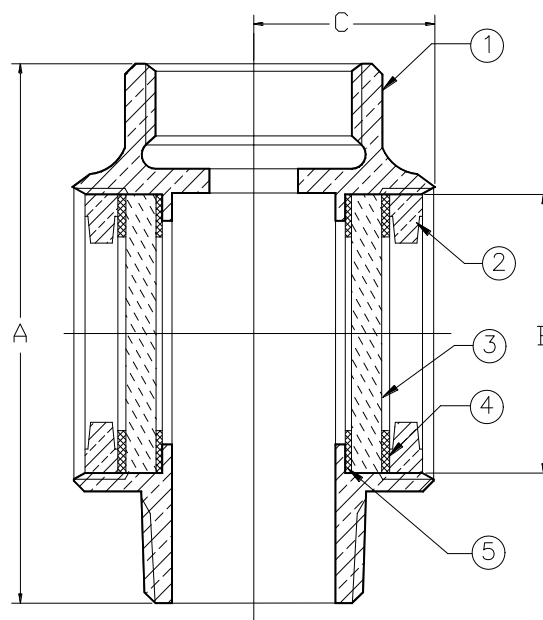
***Contains Lead. Not Intended For Use in Potable
Water Systems***

** Continuous use above 150° can cause embrittlement
and reduce strength of Polycarbonate Window.*

MATERIAL LIST

NO.	DESCRIPTION	MATERIAL
1	Body	Bronze
2	Ring	Brass
3	Window	Polycarbonate
4	Gasket	Cork
5	Gasket	Buna

Size	1"	1 1/4"
Operating Pressure (PSI) ***	175	175
A	4.00	4.00
B	1.63	1.63
C	1.69	1.75
Ship Wgt. (lbs)	1.50	1.50
Qty. Unit Pack	4	4
Unit Per Case	40	40





UNITED BRASS WORKS, INC.

714 S. Main St., Randleman, NC 27317

Tel: 800-334-3035 Fax: 800-498-4696 www.ubw.com



Model 90 Wafer Check Valve



UL Listed • FM Approved*

**As antiwater hammer check valve for fire pump service only!*

250 WOG @ 180° Max

100% Pressure Tested

Approved by New York City Board of Standards & Appeals under Calendar No. 157-84-SA.

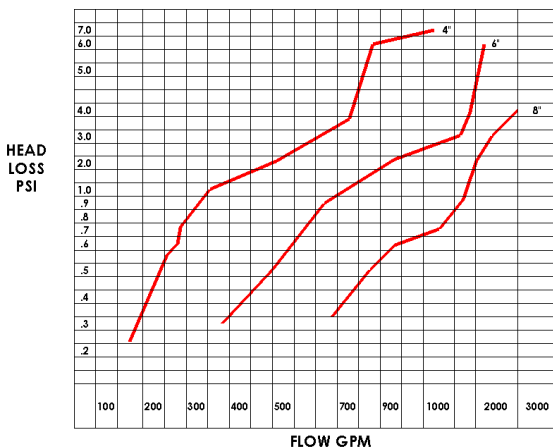
The 4" size is provided with 1/2" pipe plug in drain port as standard configuration.

****Contains Lead. Not Intended for Use in Potable Water Systems****

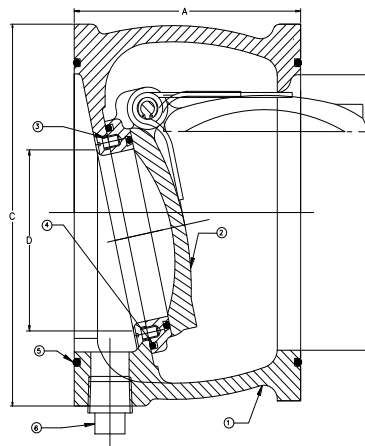
MATERIAL LIST

NO.	DESCRIPTION	MATERIAL
1	Body	Ductile Iron
2	Seat Ring Assembly	Bronze
3	Screw	Stainless Steel
4	Seat Ring O-Ring	Buna-N
5	Face O-Ring	Buna-N
6	Pipe Plug	Steel (4" only)

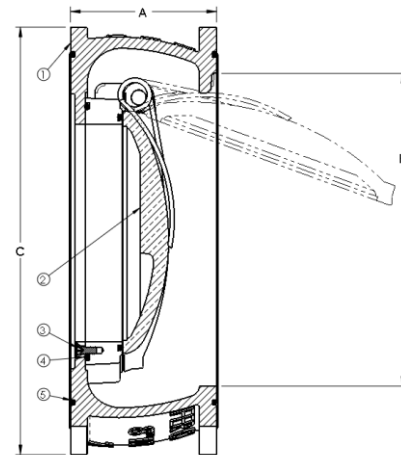
FRICTION LOSS



Can be installed vertically or horizontally



4" Size



6" & 8" Size

Size	A	B	C	D	Ship Wt. (lbs)	Qty. Per Ctn.
4"	4.25	4.03	6.86	3.00	15.0	1
6"	3.75	6.06	8.50	4.50	19.0	1
8"	3.75	7.98	11.00	6.00	29.0	1



UNITED BRASS WORKS, INC.
 714 S. Main St., Randleman, NC 27317
 Tel: 800-334-3035 Fax: 800-498-4696 www.ubw.com



Model 90WBD Wafer Check Valve



UL Listed • FM Approved*

**As antiwater hammer check valve for fire pump service only!*

250 WOG @ 180 ° Max
100% Pressure Tested

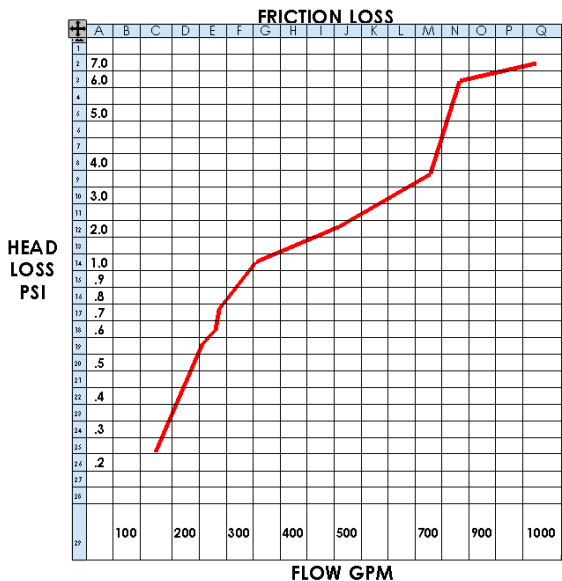
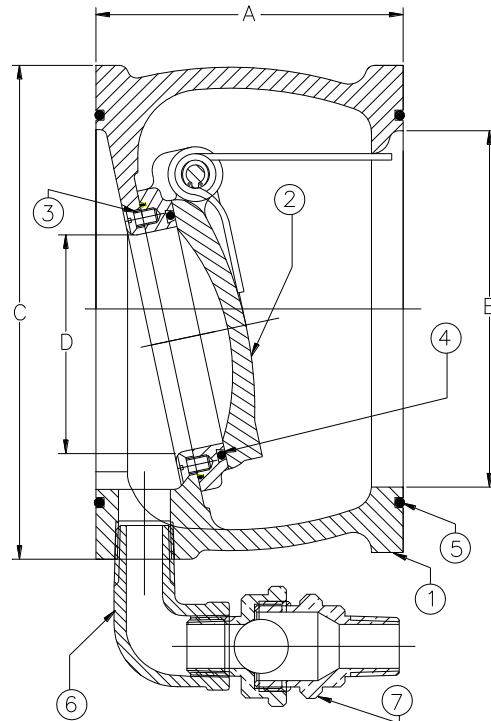
*Approved by New York City Board of Standards & Appeals
 under Calendar No. 157-84-SA.*

**Contains Lead. Not intended for Use in Potable Water
 Systems**

MATERIAL LIST

NO.	DESCRIPTION	MATERIAL
1	Body	Ductile Iron
2	Seat Ring Assembly	Bronze
3	Screw	Stainless Steel
4	Seat Ring O-Ring	Buna-N
5	Face O-Ring	Buna-N
6	Street Elbow	Galvanized Steel
7	Ball Drip	(See spec for 235 1/2")

Can be installed vertically or horizontally



Size	A	B	C	D	Ship Wt. (lbs)	Qty. Per Ctn.
4"	4.25	4.03	6.86	3.00	15.0	1



UNITED BRASS WORKS, INC.
 714 S. Main St. Randleman, N.C. 27317
 Tel: 800-334-3035 Fax: 800-498-4696 www.ubw.com



Model 67 Grooved Check Valve

UL Listed • FM Approved*

**As anti-water hammer check valve for fire pump service only!*

250 WOG @ 180 ° Max

100% Pressure Tested

Grooved Ends

Drilled, tapped

and fitted with 1/2" drain plug.

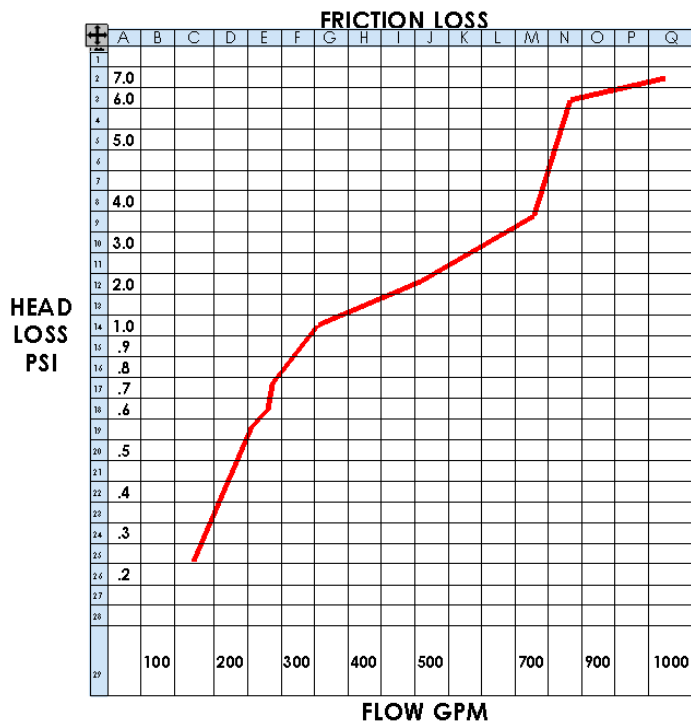
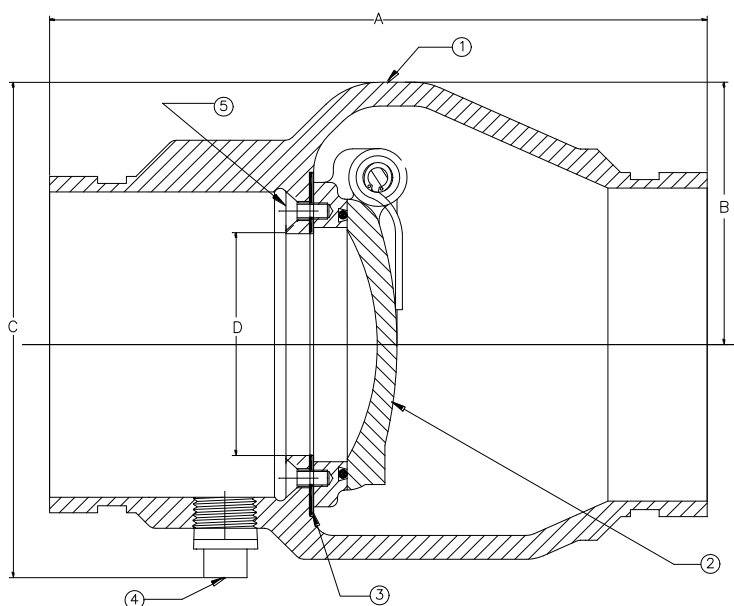
(Will also allow installation of UBW #235 Ball Drip Valve)

Contains lead. Not intended for use in potable water systems

Can be installed vertically or horizontally

MATERIAL LIST

NO.	DESCRIPTION	MATERIAL
1	Body	Ductile Iron
2	Seat Ring Assembly	Bronze
3	Seat Ring Gasket	Buna
4	Pipe Plug	Steel
5	Screw	Stainless Steel



Size	A	B	C	D
4"	8.56	3.44	6.25	3.00

Ship Wgt. (lbs.)	Qty. Per Ctn.
17.0	1



UNITED BRASS WORKS, INC.
 714 S. Main St. Randleman, N.C. 27317
 Tel: 800-334-3035 Fax: 800-498-4696 www.ubw.com



Model 68 Threaded Check Valve

Male NPT x Female NPT

UL Listed • FM Approved

**As anti-water hammer check valve for fire pump service only!*

250 WOG @ 180 ° Max

100% Pressure Tested

Threaded Ends

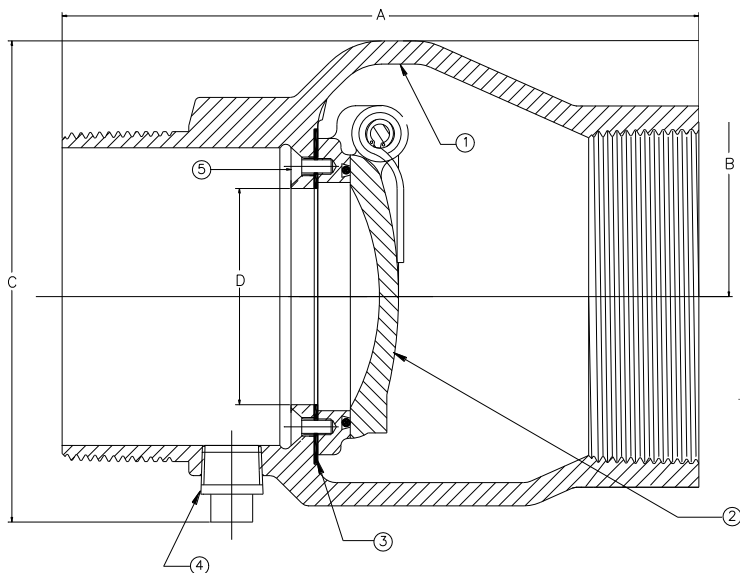
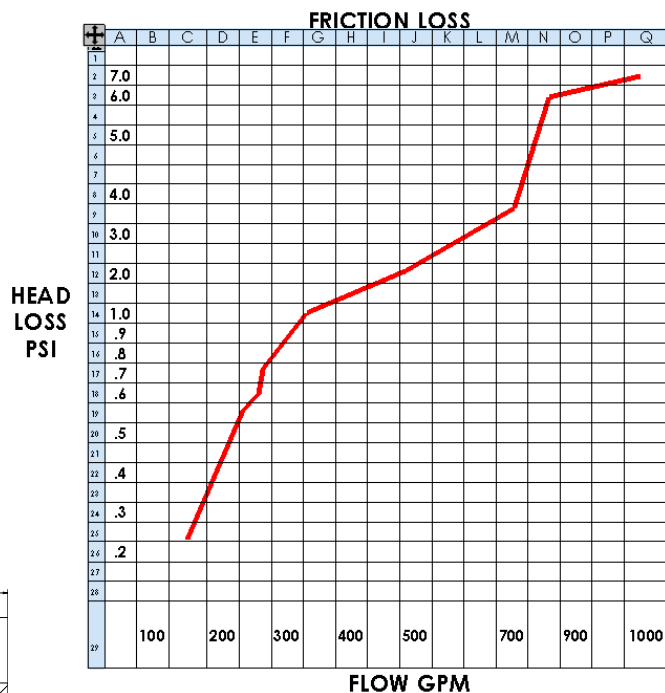
Equipped with 1/2" drain plug

**Contains Lead. Not For Use in Water Systems Intended
For Human Consumption**

Can be installed vertically or horizontally

MATERIAL LIST

NO.	DESCRIPTION	MATERIAL
1	Body	Ductile Iron
2	Seat Ring Assembly	Bronze
3	Seat Ring Gasket	Buna
4	Pipe Plug	Steel
5	Screw	Stainless Steel



Size	A	B	C	D
4"	8.56	3.44	6.25	3.00

Ship Wgt. (lbs.)	Qty. Per Ctn.
17.0	1



UNITED BRASS WORKS, INC.
 714 S. Main St. Randleman, N.C. 27317
 Tel: 800-334-3035 Fax: 800-498-4696 www.ubw.com



Model 68TXG Threaded Check Valve Male NPT x Groove Connection

UL Listed • FM Approved

**As anti-water hammer check valve for fire pump service only!*

250 WOG @ 180 ° Max

100% Pressure Tested

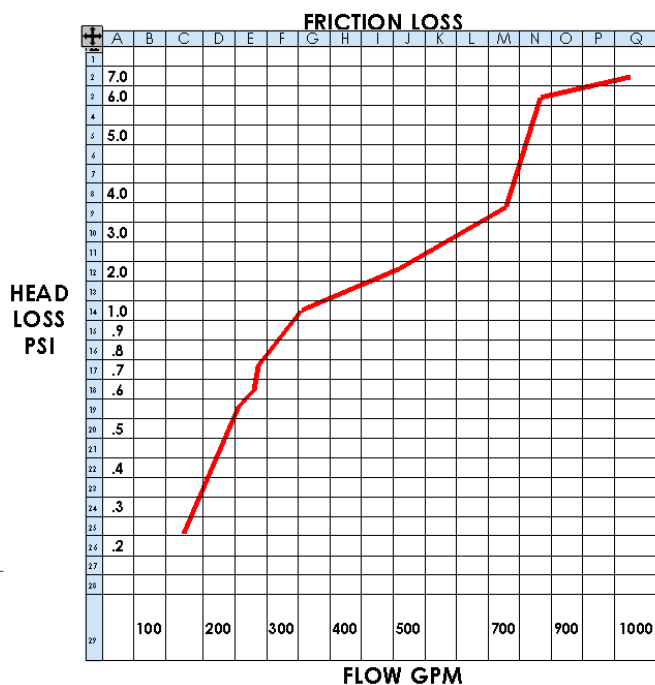
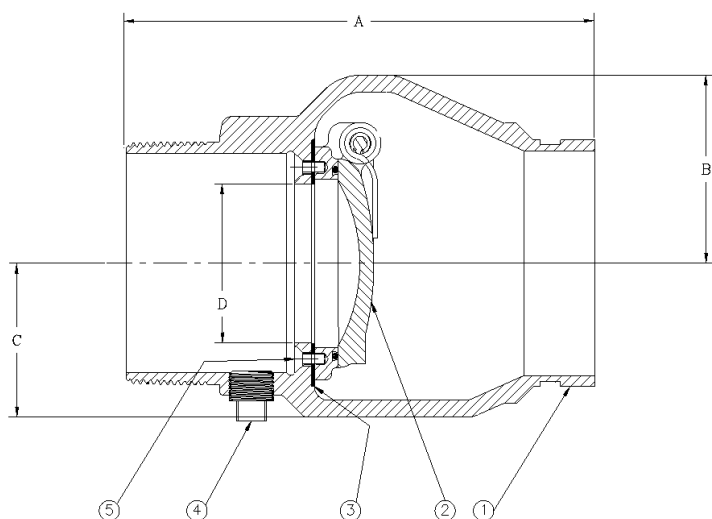
Equipped with 1/2" drain port

***Contains Lead. Not For Use in Water Systems Intended
For Human Consumption***

Can be installed in vertically or horizontally

MATERIAL LIST

NO.	DESCRIPTION	MATERIAL
1	Body	Ductile Iron
2	Seat Ring Assembly	Bronze
3	Seat Ring Gasket	Buna
4	Pipe Plug	Steel
5	Screw	Stainless Steel



Size	A	B	C	D
4"	8.56	3.40	2.80	3.00

Ship Wgt. (lbs.)	Qty. Per Ctn.
17.0	1

TERMS AND CONDITIONS OF SALE

1. United Brass Works, Inc. agrees to sell products pursuant to its standard terms and conditions, unless it agrees to other terms in writing signed by both parties. The printed provisions on the reverse of any customer Purchase Order or on any other form supplied unilaterally by any customer shall be deemed rejected by United Brass Works, Inc. and shall be void and of no effect.
2. Where shown, valves will be shipped in multiples of packaged quantities. Order quantities will be changed to coincide with multiples of packaged quantities.
3. All prices are listed net, FOB, Randleman, North Carolina with freight allowed in Bronze and/or Iron Valves of 750 lbs. or more to all points in the U.S. (excluding Alaska and Hawaii) and to the nearest port of embarkation for foreign shipments (including Alaska and Hawaii), on all orders and back orders United Brass' responsibility terminates upon receipt of a bill of lading by the carrier.
4. Minimum merchandise invoice amount shall be \$50.00 per order. All orders received for merchandise that totals to less than \$50.00 shall be invoiced at the minimum charge.
5. Prices are subject to change without notice and orders will be invoiced at price in effect at time of shipment.
6. Terms are thirty days net, provided credit is approved. Where no credit information is available, shipments will be made COD or sight draft Charge accounts are extended to businesses, institutions, and organizations only, not to individuals. To qualify for open account privileges, an account must be rated satisfactory in Dun & Bradstreet or supply names of three commercial vendors who have extended credit. Allow four weeks to establish account when references other than a satisfactory Dun & Bradstreet rating are furnished.
7. No material shall be accepted for credit or replacement without prior return authorization being obtained and an RMA number being issued for the material. All materials must be returned prepaid.
8. This warranty gives you specific legal rights, and you may also have other rights which vary from state to state. During the first ninety (90) days after date of delivery of this product to the original purchaser. United Brass Works, Inc., will remedy any defect or malfunction found therein. However, the original purchaser shall be responsible for all labor costs. United Brass Works, Inc., extends this limited 90-Day Warranty to the original purchaser of this product only, and not to any subsequent transferees.

This warranty does not apply to conditions resulting from improper installation, inadequate maintenance, misuse, abuse, accident or alteration. This is the only warranty applicable to products manufactured by United Brass Works, Inc., and the Company neither assumes nor authorizes anyone to assume for it any other obligation or liability in connection with such products.

ANY IMPLIED WARRANTIES OR MERCHANT-ABILITY OR FITNESS FOR A PARTICULAR PURPOSE SHALL BE LIMITED INDURATION TO THE PERIOD OF THE ABOVE 90-DAY WARRANTY. SOME STATES DO NOT ALLOW LIMITATIONS ON HOW LONG AN IMPLIED WARRANTY LASTS, SO THE ABOVE LIMITATION MAY NOT APPLY TO YOU.

UNITED BRASS WORKS, INC., SHALL NOT BE LIABLE FOR COMMERCIAL CONSEQUENTIAL DAMAGES SUCH AS PROPERTY DAMAGES AND INCIDENTAL EXPENSES RESULTING FROM BREACH OF THIS WARRANTY. SOME STATES DO NOT ALLOW THE EXCLUSION OR LIMITATION OF INCIDENTAL OR CONSEQUENTIAL DAMAGES, SO THE ABOVE LIMITATION OR EXCLUSION MAY NOT APPLY TO YOU.

9. All United Brass merchandise may be returned for credit if unused and in new condition after receipt of prior authorization within 60 days of purchase. Merchandise will not be accepted for return beyond 60 days after purchase. (This does not apply to defective merchandise.) A 15% restocking charge will be levied unless United Brass Works was in error. **Please call for Return Material Authorization number before returning merchandise.**
10. There will be a 15% surcharge on all merchandise drop shipped unless the invoice amount exceeds \$50.00.
11. All claims for short shipments must be made within 10 days of receipt of material. Claims made after 10 days of receipt will not be honored.
12. United Brass Works, Inc., reserves the right to ship orders by means we deem most expedient and least expensive unless your order contains specific instructions and provided these instructions do not entail additional expense for the company.
13. All cancellations must be in writing and any expense incurred processing your order prior to the cancellation shall be invoiced to you.
14. All telephone and telegraph orders must be confirmed in writing.
15. All orders taken by salesmen are subject to approval by home office.
16. United Brass Works, Inc., reserves the right to make partial shipment if such is necessary, unless order has specific instruction to the contrary.
17. All delivery dates are approximate and United Brass Works, Inc., is not responsible for failure to meet dates specified.