



UNITED BRASS WORKS, INC.

714 S. Main St. Randleman, N.C. 27317

Tel: 800-334-3035 Fax: 800-498-4696 www.ubw.com



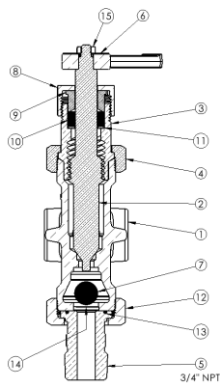
Model 900Q 3/4" Quick Opening Valve Set With Ball Checks

300 WSP @ 450 ° F Max • 600WOG @ Ambient Temperature
100% Pressure Tested @ 900 PSI • Valves are 1/2" NPTF Both Sides
ASME Compliant per B31.1 and Section One, PG 60
Appendix A18 of ASME Boiler Code.

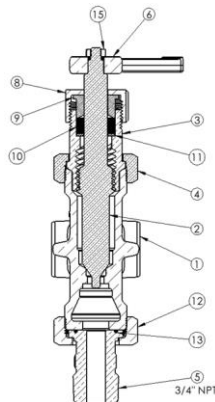
Complete Installation Instructions Are Included With Each Set

Contains Lead. Not For Use in Potable Water Systems

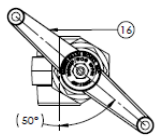
Revision 1



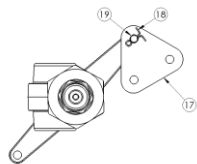
UPPER VALVE



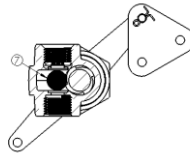
LOWER VALVE



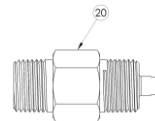
UPPER VALVE LEVER



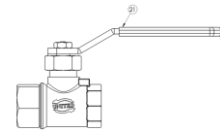
LOWER VALVE LEVER



LOWER VALVE
CROSS SECTION



SPECIAL DRAIN
FITTING



1/2" FNPT BALL VALVE
300 WSP

MATERIAL LIST

PART NO.	DESCRIPTION	MATERIAL	QUANTITY	PART NO.	DESCRIPTION	MATERIAL	QUANTITY
1	BODY	ASTM B61	1	12	UNION NUT	ASTM B61	1
2	STEM	ASTM B21	1	13	O-RING	TFE/P	1
3	BONNET	ASTM B16	1	14	RETAINING RING	300 STAINLESS	1
4	BONNET NUT	ASTM B61	1	15	JAM NUT	ASTM B19	1
5	3/4" UNION TAIL PIECE	ASTM B16	1	16	TEE HANDLE	ASTM B62	1
6	MARKER DISC	300 STAINLESS	1	17	EQUALIZER	CARBON STEEL	1
7	BALL CHECK	302 STAINLESS	1	18	COTTER PIN	300 STAINLESS	1
8	PACKING NUT	ASTM B16	1	19	CLEVIS PIN	STAINLESS	1
9	PACKING GLAND	ASTM B16	1	20	SPECIAL DRAIN FITTING	ASTM B16	1
10	PACKING	33 NAFG	1	21	480 BALL VALVE 300 WSP	ASTM B61	1
11	PACKING WASHER	300 STAINLESS	1				

