



UNITED BRASS WORKS, INC.

714 S. Main St. Randleman, N.C. 27317

Tel: 800-334-3035 Fax: 800-498-4696 www.ubw.com



Model 897 Bronze Size 5 Sight Glass

300 WSP @ 450 ° F Max

600 WOG @ Ambient Temperature

100% Pressure Tested @ 900 PSI • Threaded Ends 1/2" FNPT

Designed to Boiler and Pressure Vessel Code Section 1 & ASME B31.1

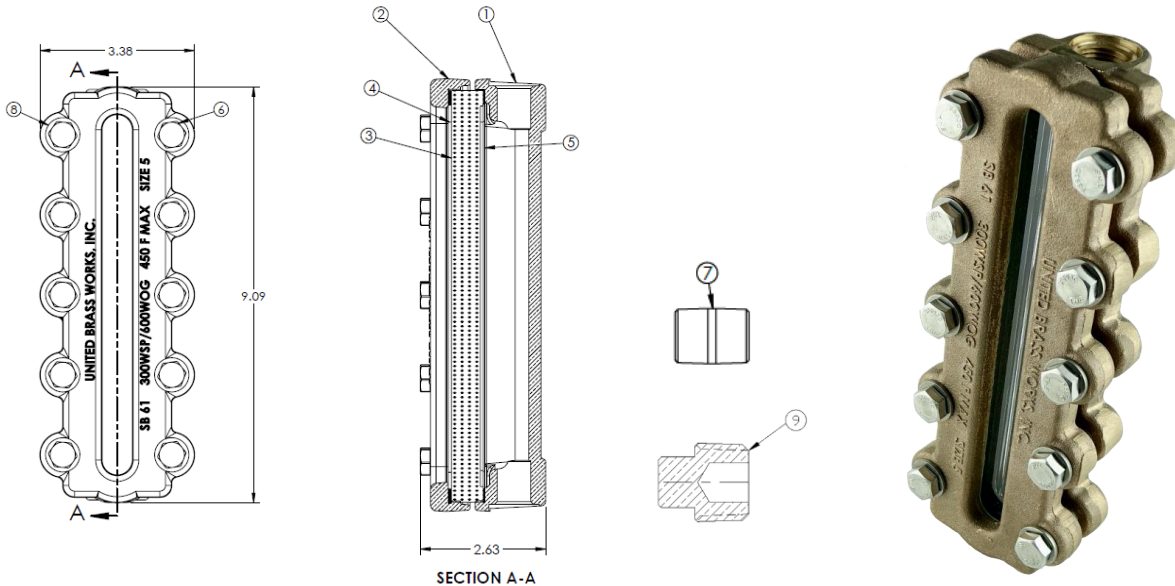
Install Using Supplied Nipples Only Along with United Brass Gauge Valve Sets to Maintain 11 1/2"

Center-To-Center Dimensions

Viewable Area 7 3/4"

Contains Lead. Not For Use in Potable Water Systems

Revision 1



MATERIAL LIST			
NO.	DESCRIPTION	MATERIAL	QUANTITY
1	SIZE 5 GAUGE BODY	ASTM B61	1
2	COVER SIZE 5	ASTM B61	1
3	SIZE 5 REFLEX GLASS	BOROSILICATE	1
4	GAUGE GLASS CUSHION	KLINGER 4430	1
5	GAUGE GLASS GASKET	GRAFOIL	1
6	HEX HEAD CAP SCREW	STAINLESS STEEL SAE J429 GRADE 8	10
7	SPECIAL NIPPLE	ASTM B43	2
8	DISC SPRING WASHER	301/302 STAINLESS STEEL	10
9	PIPE PLUG 1/2"	ASTM B16	1

APPLICABLE UBW GAUGE VALVE SETS

PART NO.	DESCRIPTION
900S	1/2" VALVE SET SLOW OPENING
900S	3/4" VALVE SET SLOW OPENING
900Q	1/2" VALVE SET QUICK OPENING
900Q	3/4" VALVE SET QUICK OPENING