



UNITED BRASS WORKS, INC.
 714 S. Main St. Randleman, N.C. 27317
 Tel: 800-334-3035 Fax: 800-498-4696 www.ubw.com



Model 67 Grooved Check Valve

UL Listed • FM Approved*

**As anti-water hammer check valve for fire pump service only!*

250 WOG @ 180 ° Max

100% Pressure Tested

Grooved Ends

Drilled, tapped

and fitted with 1/2" drain plug.

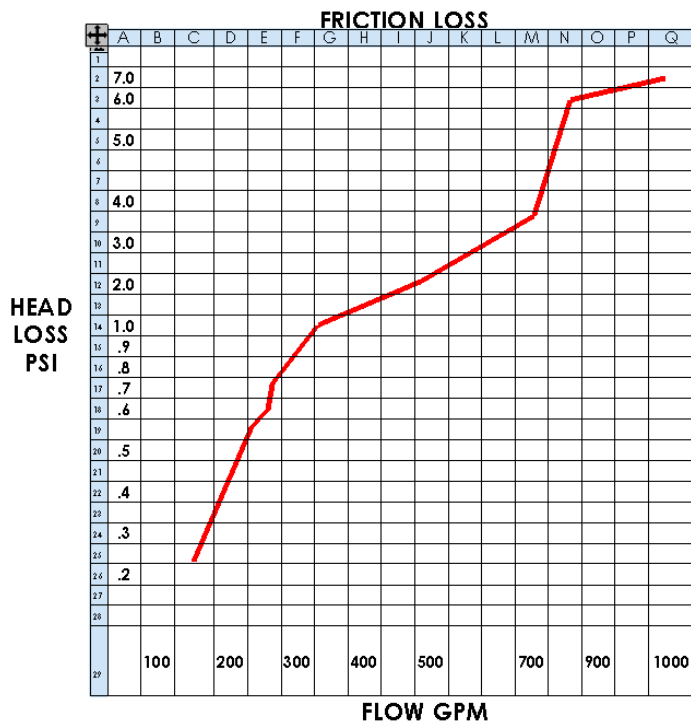
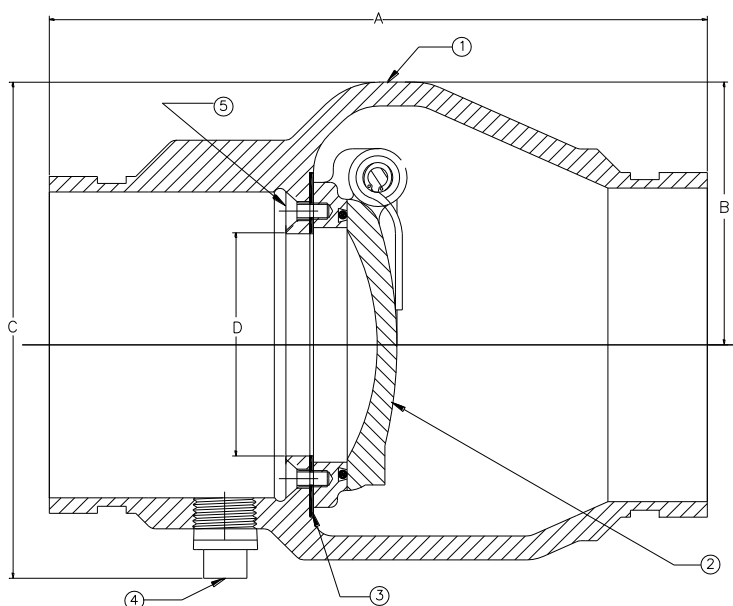
(Will also allow installation of UBW #235 Ball Drip Valve)

Contains lead. Not intended for use in potable water systems

Can be installed vertically or horizontally

MATERIAL LIST

| NO. | DESCRIPTION | MATERIAL |
|-----|--------------------|-----------------|
| 1 | Body | Ductile Iron |
| 2 | Seat Ring Assembly | Bronze |
| 3 | Seat Ring Gasket | Buna |
| 4 | Pipe Plug | Steel |
| 5 | Screw | Stainless Steel |



| Size | A | B | C | D |
|------|------|------|------|------|
| 4" | 8.56 | 3.44 | 6.25 | 3.00 |

| Ship Wgt. (lbs.) | Qty. Per Ctn. |
|------------------|---------------|
| 15.10 | 1 |